


## Quick Reference Guide: Using Internet Explorer with eData

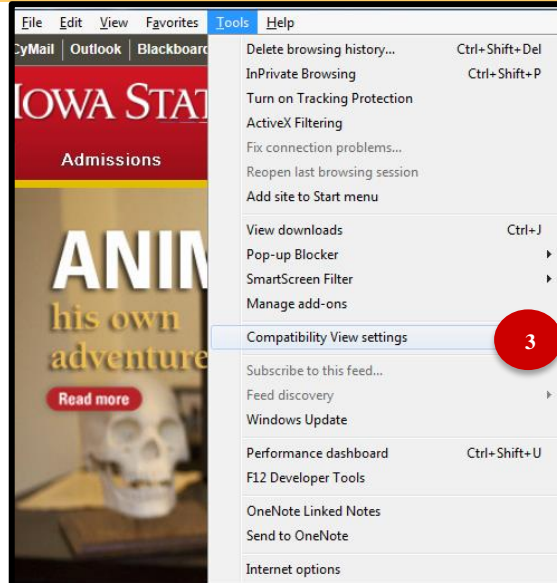
**Instructions:** Use the following steps to enable your browser to trust content from eData. These steps will help you to configure Internet Explorer (IE) 10 to log into eData through the local intranet.

**Note:** Please be sure to update your IE web browser. These instructions are designed to help with the latest versions of IE (9 and 10). Other browsers are not affected and can be used instead of IE.

1. Open **Internet Explorer (IE)**.

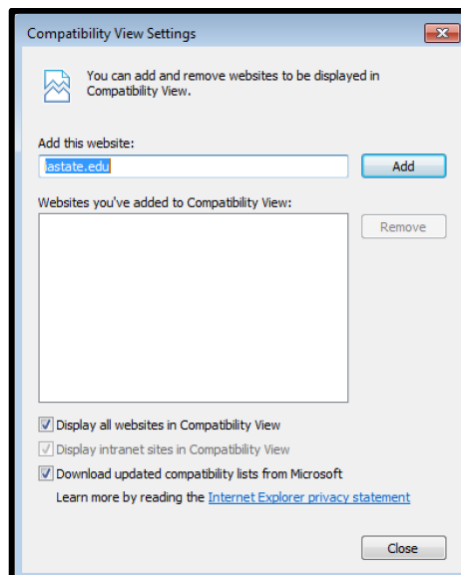
2. Click the **Tools**  icon (if you don't see **Tools**, press the **ALT** key).

3. Click **Compatibility View Settings**.




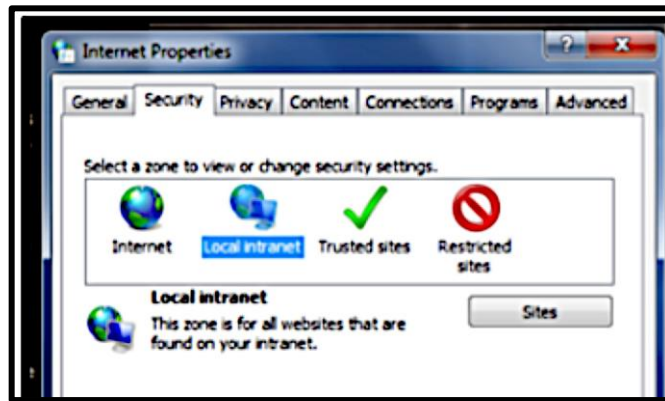
4. Add **iastate.edu** to the listed websites or check **Display all websites in Compatibility View**.

5. Click **Close**.

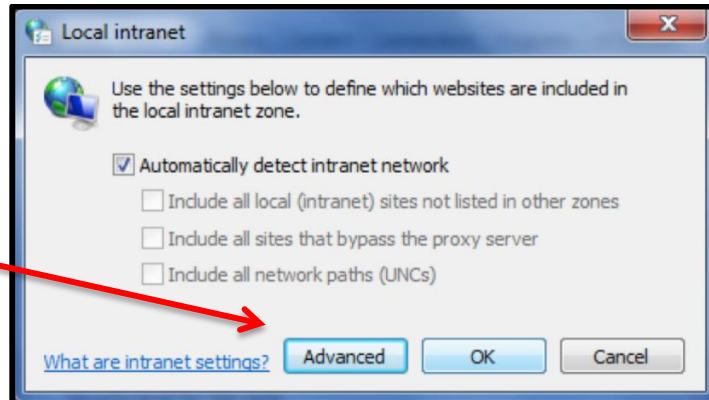


## Quick Reference Guide: Using Internet Explorer with eData

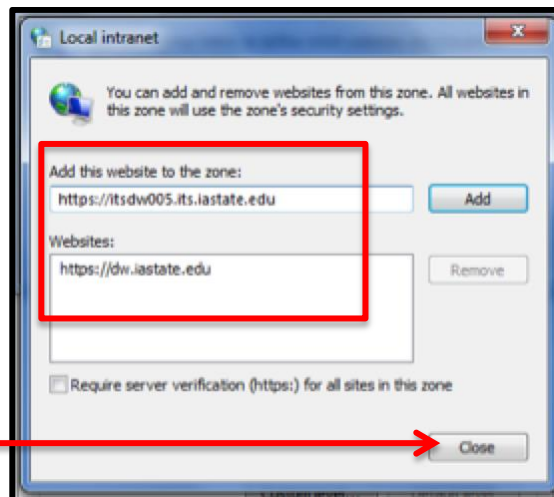
6. Click the **Tools**  icon (if you don't see **Tools**, press the **ALT** key).
7. Click the **Local intranet** icon on the **Security** tab.
8. Click **Sites**.



9. Click **Advanced** on the **Local intranet** screen.

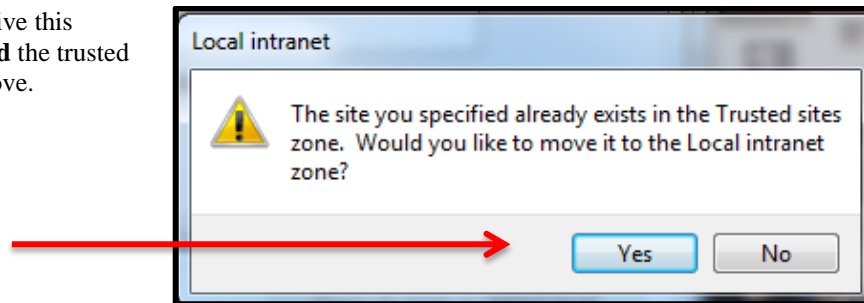


10. Type in <https://dw.iastate.edu> then click **Add**.
11. Type in <https://itsdw005.its.iastate.edu> then click **Add**.
12. Click **Close**.

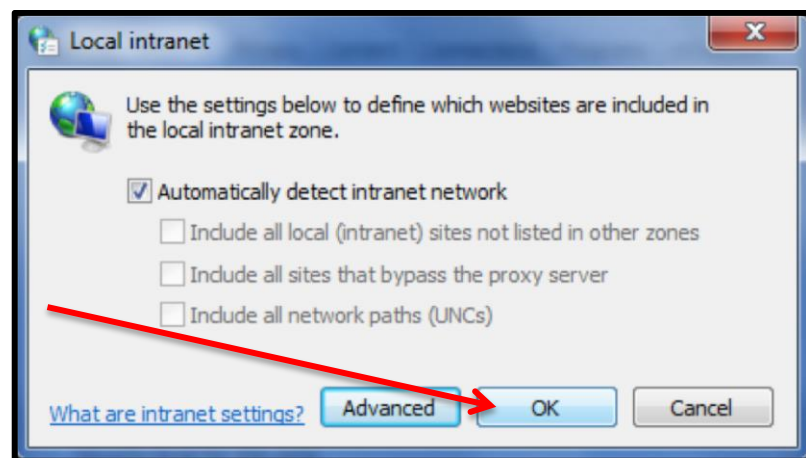


## Quick Reference Guide: Using Internet Explorer with eData

*Note:* Click **Yes** if you receive this message when trying to **Add** the trusted sites in **steps 10 and 11** above.



13. Click **OK** on the **Local intranet** screen.



## Quick Reference Guide: Using Internet Explorer with eData

14. Click **OK** on the **Internet Properties** screen.

15. Log into **eData** from **AccessPlus**.

