

Quick Reference Guide: Configuring Your Browser to Open New Tabs in eData

Instructions: Use the steps below to configure your browser to work in eData.

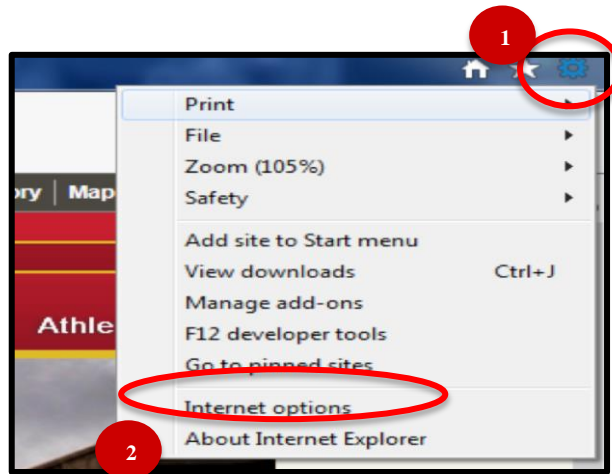
Supported Browsers for eData

Use one of the following browsers to log into eData.

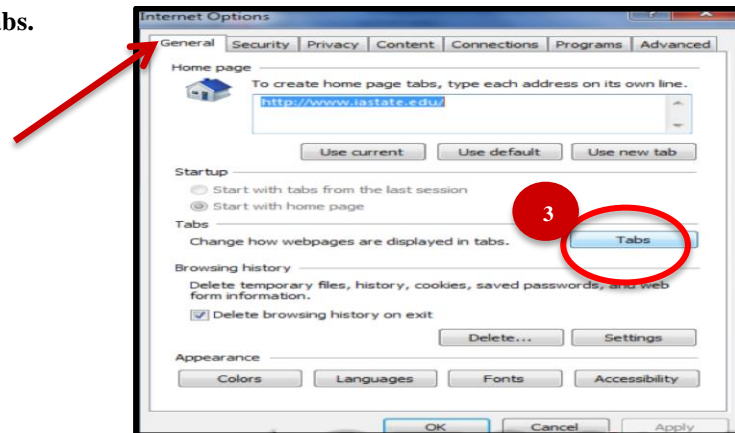
- Internet Explorer 9 or up
- Firefox 12
- Safari 6 or up (optional for MACs)

When Using Internet Explorer

1. Click **Tools** (or the settings wheel icon).
2. Click **Internet Options**.

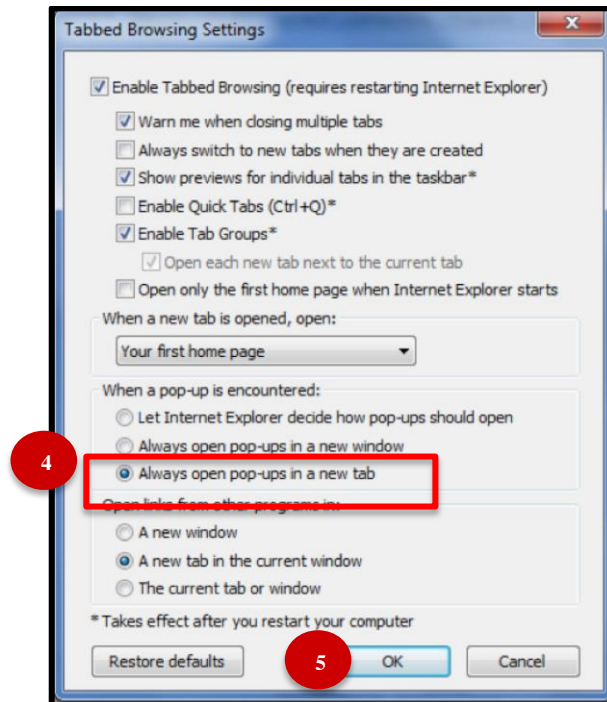


3. On **General** tab, click **Tabs**.



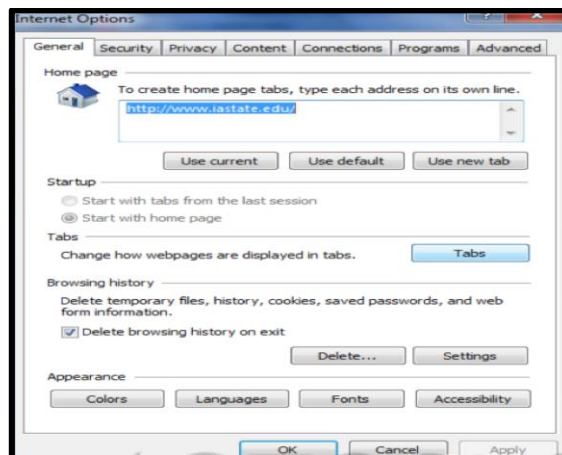
Quick Reference Guide: Configuring Your Browser to Open New Tabs in eData

- Under the **Tabbed Browsing Settings** and heading “**When a pop-up is encountered**”, check **Always open pop-ups in a new tab**.
- Click **OK** at the bottom of the **Tabbed Browsing Settings** window.



- Click **OK** in the **Internet Options** window.
- Click ‘x’ to close the settings.

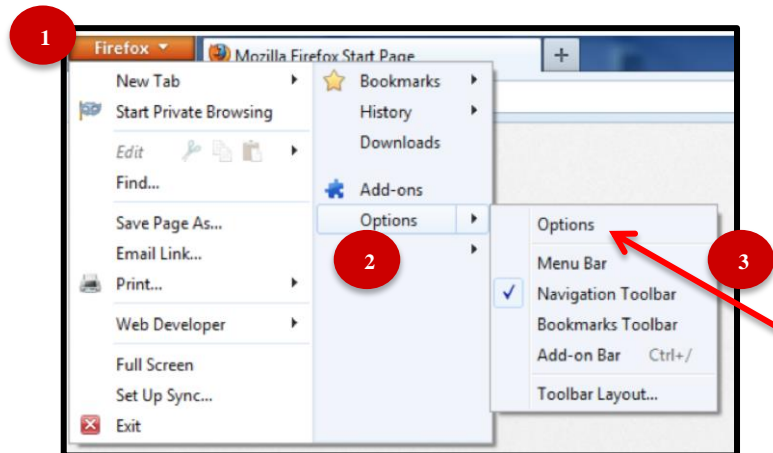
Note: You should now be able to see pop-ups in new tabs instead of new windows.



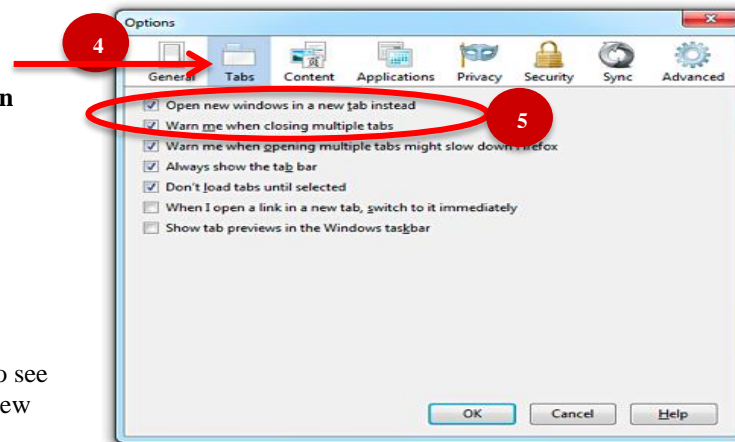
Quick Reference Guide: Configuring Your Browser to Open New Tabs in eData

When Using FireFox

1. Click **Firefox**.
2. Then click **Options**.
3. And **Options** again.



4. Click the **Tabs** icon.
5. Check the option "**Open new windows in a tab instead**".
6. Click **OK**.
7. Click 'x' to close the settings.



Note: You should now be able to see pop-ups in new tabs instead of new windows.